

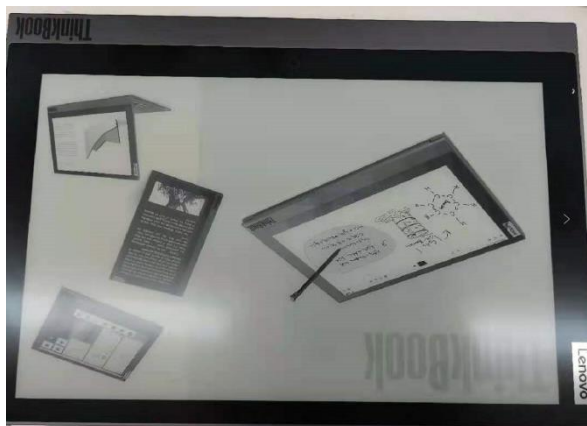
E-ink Panel Function Test SOP for ThinkBook Plus G2

There are 2 kinds of tests for E-ink Panel Function test, shall be run after LCM (with E-ink panel) FRU replacement.

1. E-ink Test
2. Touch Panel Test

E-ink Test (screen lighting test)

- 1) Select the “display_4kjpg.bat” file in the “1.E-ink Test” folder to run in the administrator mode. E-ink will display the white screen first, and then press any key as prompted to switch to black or display the wallpaper screen (white/black screen can Check whether there is any display screen abnormalities).

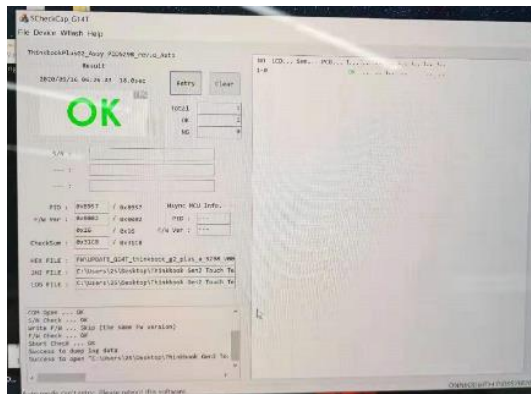


- 2) When the test is complete, restart the computer and complete the test.

Touch Panel Test

1) A/B side Touch test

Find "1.Acover_Touch_Test.bat" file in the "2. TouchPanel Test" folder, double-click to start the function Test on the A-side Touch; Double-click "2.Bcover_touch_test.bat" to test the function of B-side Touch; After testing OK, the product will display "Test OK" and exit the testing interface automatically. For products with poor testing, the test Fail will be displayed after testing.



2) A side screen home-key test

Find "3.HomeKey.bat" file in "2. TouchPanel Test" folder, double-click to start the function Test of A-side home-key; the test Tool will first prompt "**Remove fingers from homekey**". Do not touch the Homekey with your finger. When prompted to "**Touch HomeKey and Hold**", ensure the finger will not release the Touch until the end of the test (make sure the finger covers the home-key ink area during the test). Test OK after the product test is over, it will display Test OK and exit the test interface automatically.

